



## Hilscher DeviceNet<sup>®</sup> platform



### Explanation of symbols:



Read declaration carefully before you start any other action!



Attention!



Product is in conformity with EC guidelines!



Disconnect electrical power and compressed air lines. Do not touch parts under voltage!



Keep body parts and objects away from the valve opening!



Hot surfaces; do not touch!



Loaded springs and/or air cushions are potential hazards!



Wear gloves!

**STOP**

Read these «**Installation, Operating & Maintenance Instructions**» and the enclosed «**General Safety Instructions**» carefully before you start any other action!

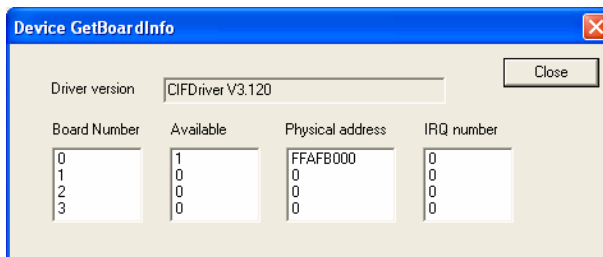
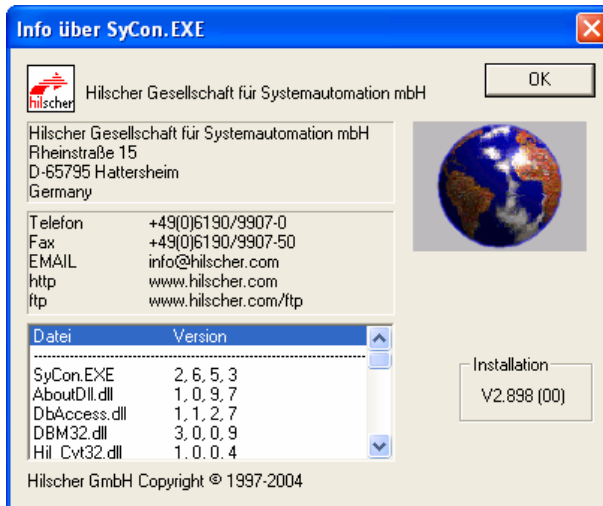


**Contents:**

1	Example conditions (Hilscher software version) .....	3
2	Setup instructions .....	3
2.1	Download the EDS file .....	3
2.2	Start the «SyCon» Hilscher program .....	4
2.3	Import the «EDS» File.....	5
2.4	Insert the master .....	7
2.5	Setting Bus Parameter .....	8
2.6	Insert Device .....	9
2.7	Device Configuration (VAT default settings) .....	10
2.8	Device Configuration (Customised settings) .....	11
2.9	Download the settings.....	12

## 1 Example conditions (Hilscher software version)

- DeviceNet<sup>®</sup> OEM-manual
- Used valve for procedure: S61.2
- DeviceNet<sup>®</sup> firmware: 264420B
- Hilscher software version: V2.898 (00)



**NOTE:**

This example shows the procedure for «DeviceNet<sup>®</sup>» setup with Hilscher software

## 2 Setup instructions

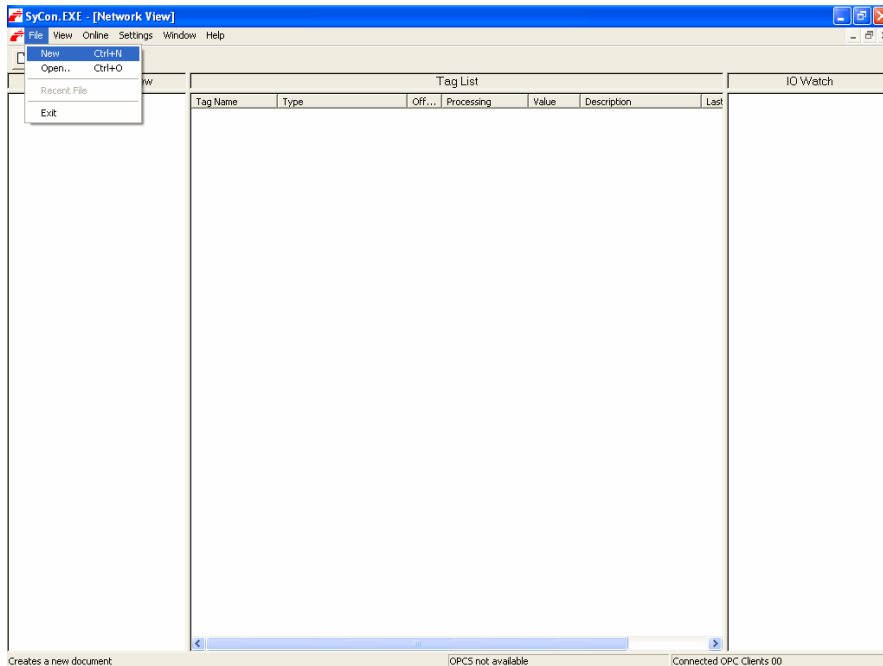
### 2.1 Download the EDS file

- Choose the EDS file from: <http://www.vat.ch> > Select your country > Service > Downloads > Download EDS Files
- Follow the procedure for your required EDS File
- Download your EDS File

## 2.2 Start the «SyCon» Hilscher program

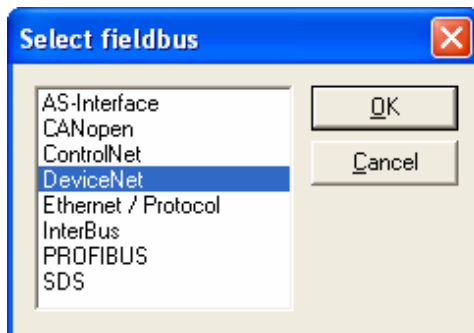
The window «SyCon.EXE» opens

1. Click the pull-down menu «File» > «New»



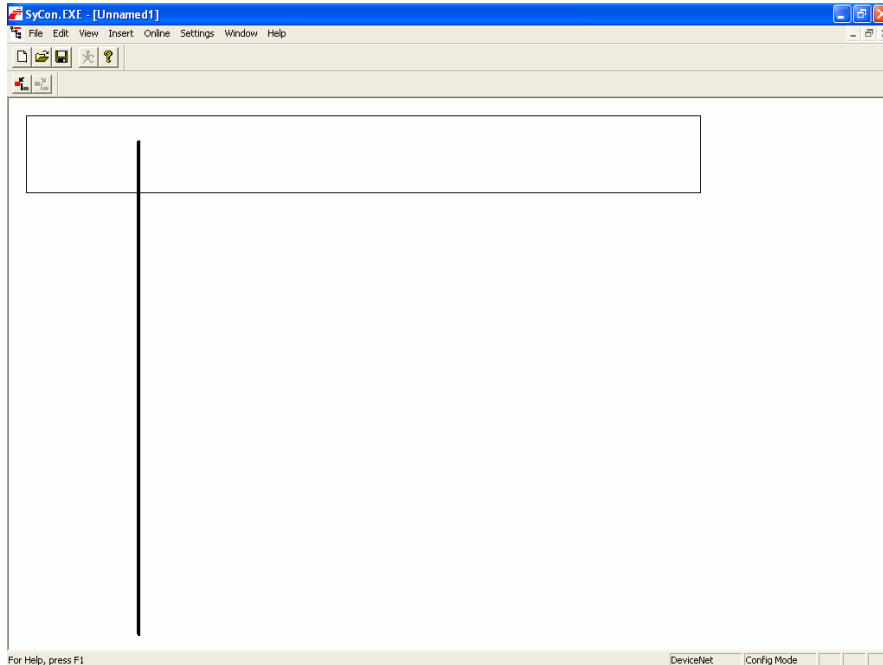
The window «Select fieldbus» opens

2. Select «DeviceNet» and click command button [OK], or go to Chapter 2.3



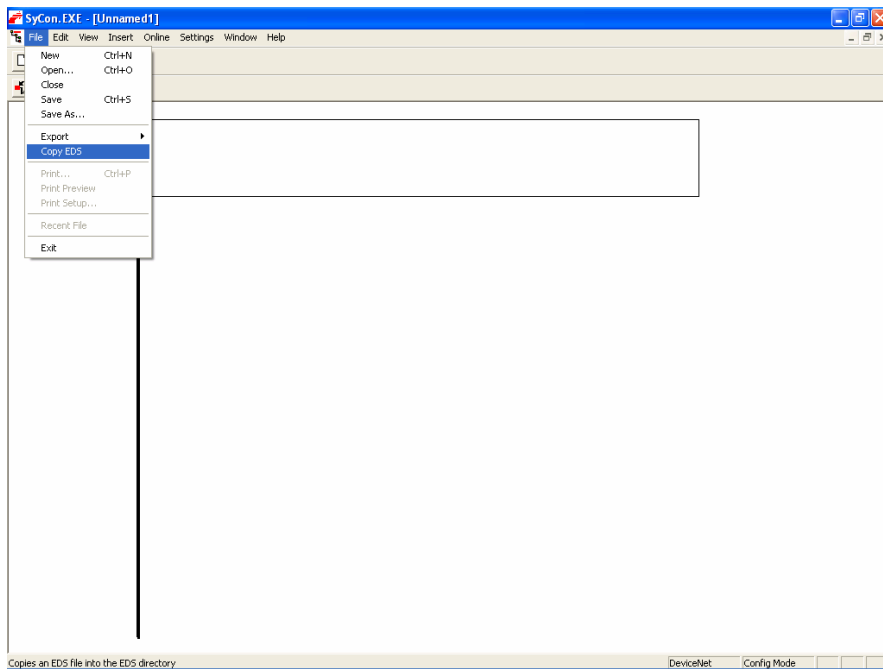


The window «SyCon.EXE Unnamed1» opens



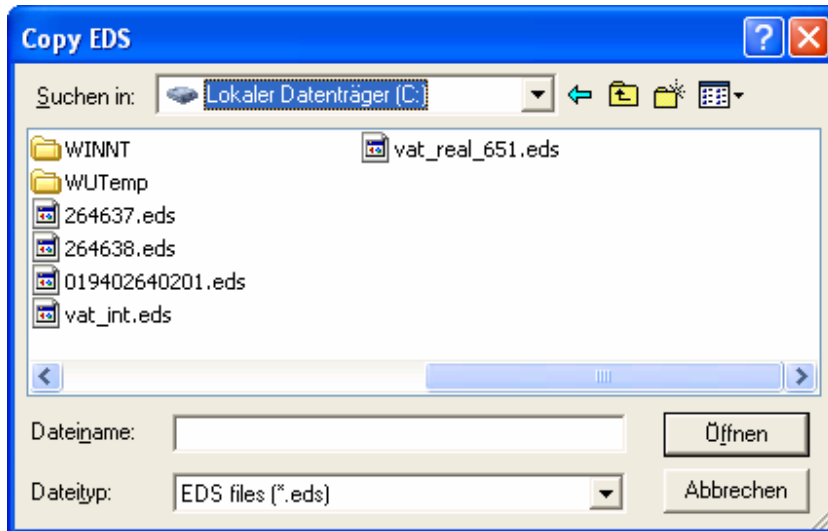
## 2.3 Import the «EDS» File

3. Click the pull-down menu «File» > «Copy EDS»



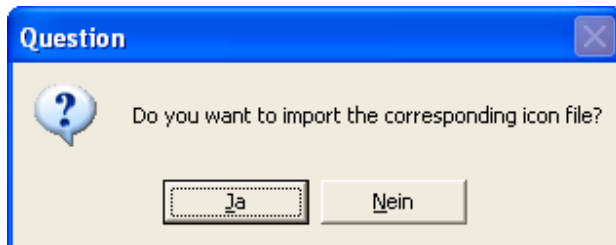
The window «Copy EDS» opens

4. Select the downloaded EDS file and click command button [Öffnen / Open]



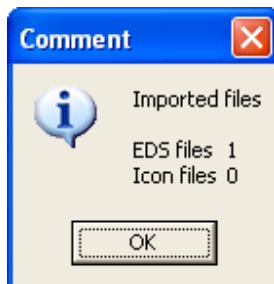
The window «Question» opens

5. Click command button [Nein / No]



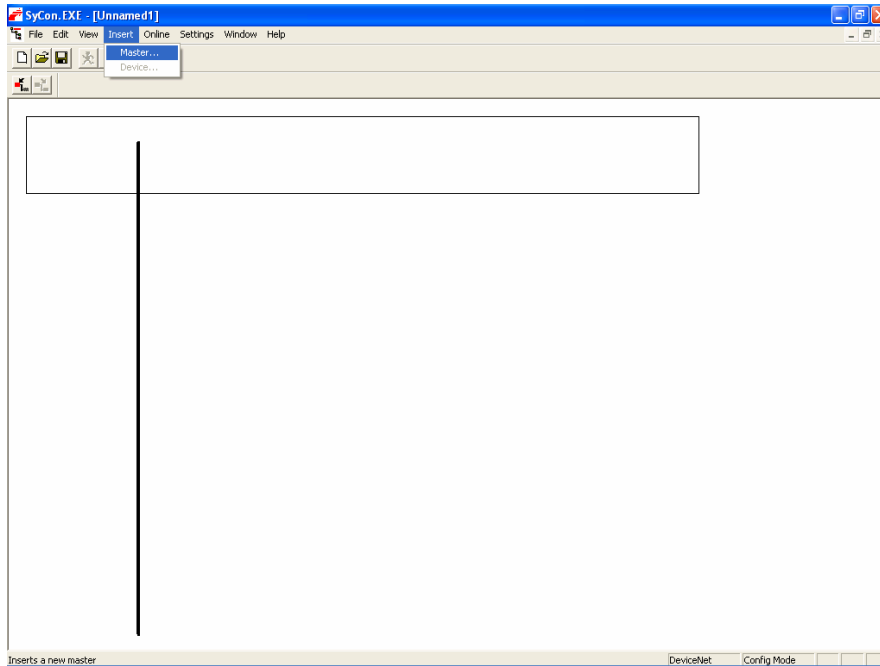
The window «Comment» opens

6. Click command button [OK]



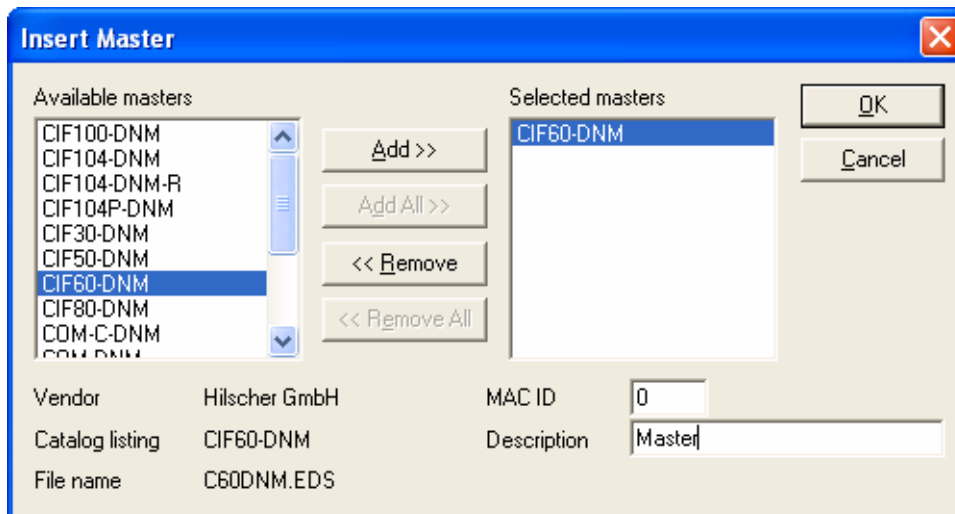
## 2.4 Insert the master

1. Click the pull-down menu «Insert» > «Master»



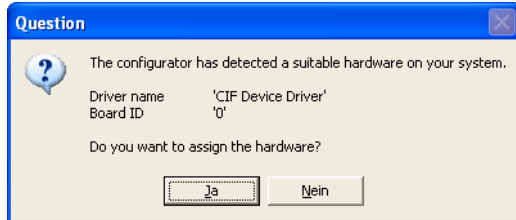
The window «Insert Master» opens

2. Select your Hilscher master at «Available masters»
3. Click command button [Add>>]
4. Click command button [OK]



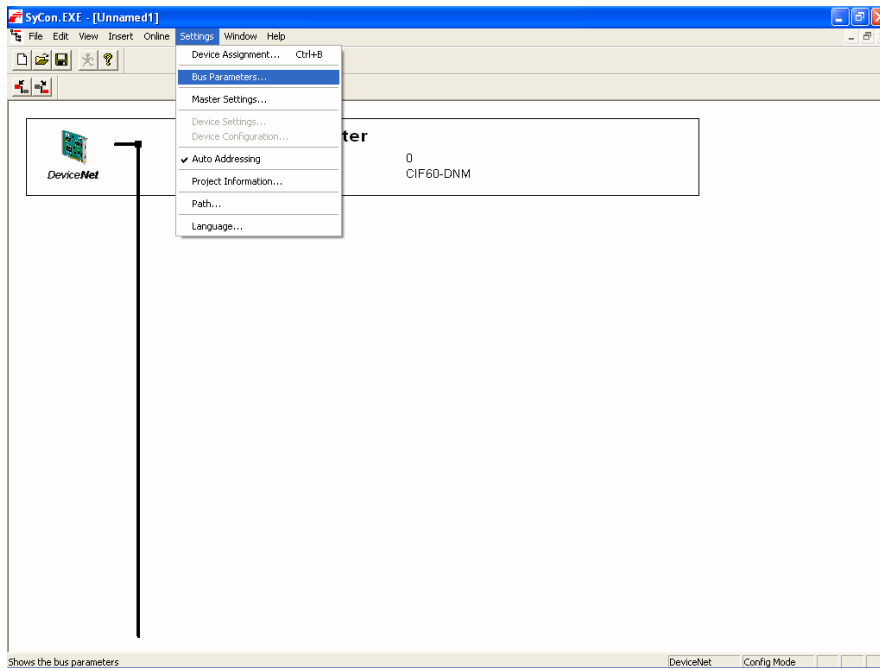
The window «Question» opens

7. Click command button [Ja / Yes]



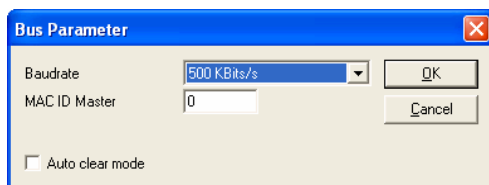
## 2.5 Setting Bus Parameter

1. Click the pull-down menu «Settings» > «Bus Parameters...»



The window «Bus Parameter» opens

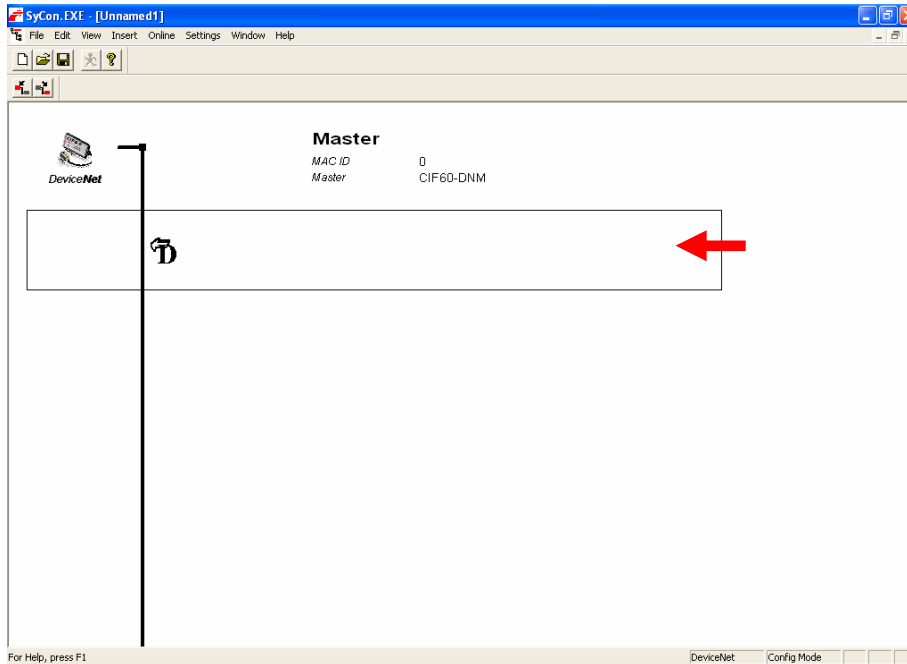
2. Select the Baud rate corresponding with your integrated controller and click command button [OK]





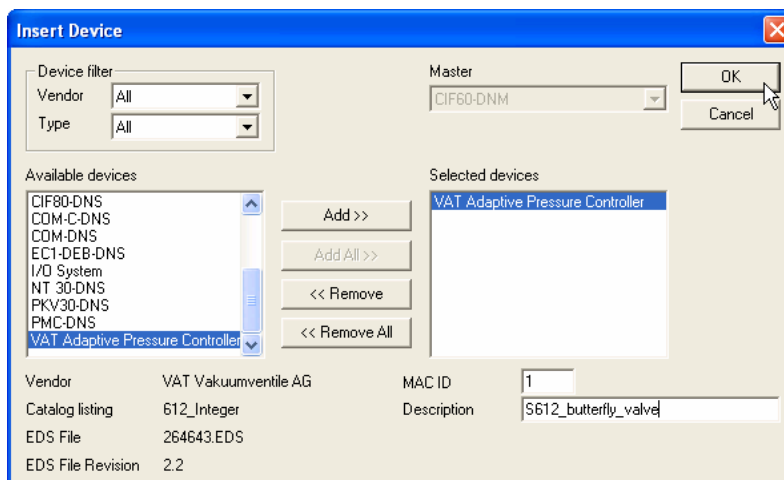
## 2.6 Insert Device

1. Click the pull-down menu «Insert» > «Device...»



The window «Insert Device» opens

2. Select your device at «Available devices»
3. Click command button [Add>>]
4. Set the «MAC ID» corresponding with your integrated controller (1)
5. Describe your valve at «Description»
6. Click command button [OK]



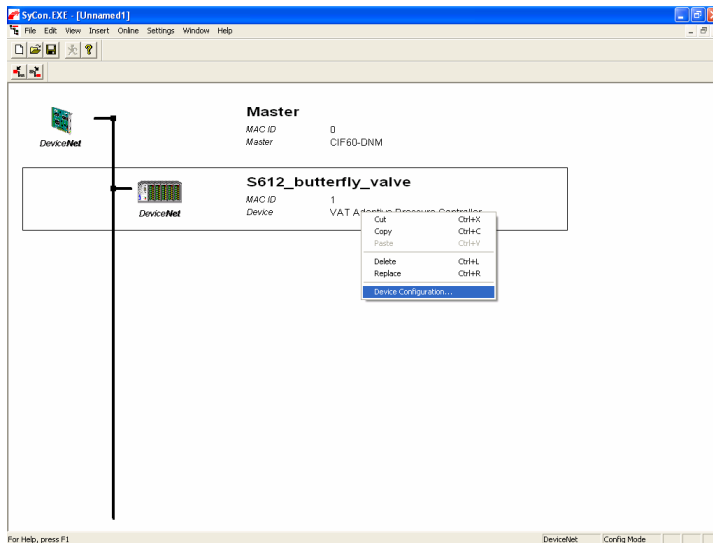


**NOTE: There are two possible settings for Device Configuration**

- VAT default settings, see chapter 2.7 Device Configuration (VAT default settings)
- Customised settings, see chapter 2.8 Device Configuration (Customised settings)

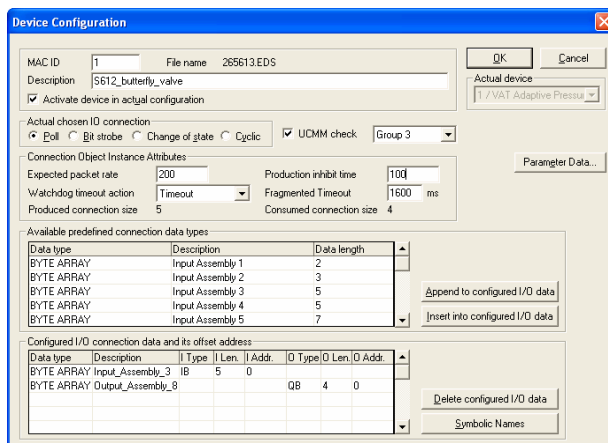
## 2.7 Device Configuration (VAT default settings)

1. Place the mouse pointer in the «VAT control valve» area and click the right mouse button, a pull-down menu opens
2. Select «Device Configuration...»



The window «Device Configuration» opens

3. Set  at «UCMM check»
4. Set 100 at «Production inhibit time»
5. Choose default assemblies (Input 3 and Output 8) corresponding with the DeviceNet OEM-manual
6. Click the command button [OK]
7. Download the settings, see chapter 2.9 Download the settings

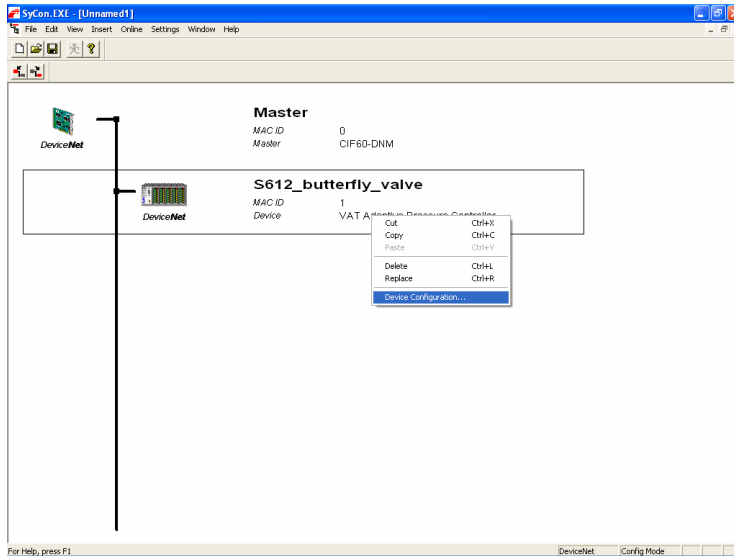




## 2.8 Device Configuration (Customised settings)

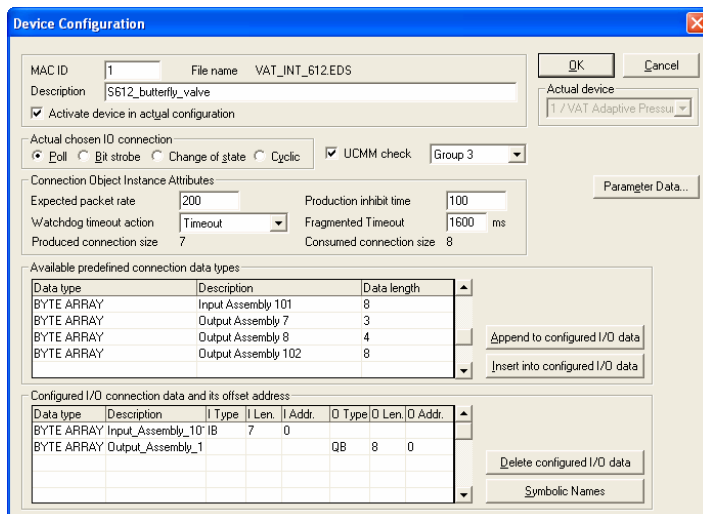
**NOTE:** Example with assemblies «Input 101» and «Output 102» plus «data type REAL 202»

1. Place the mouse pointer in the «VAT control valve» area and click the right mouse button, a pull-down menu opens
2. Select «Device Configuration...»



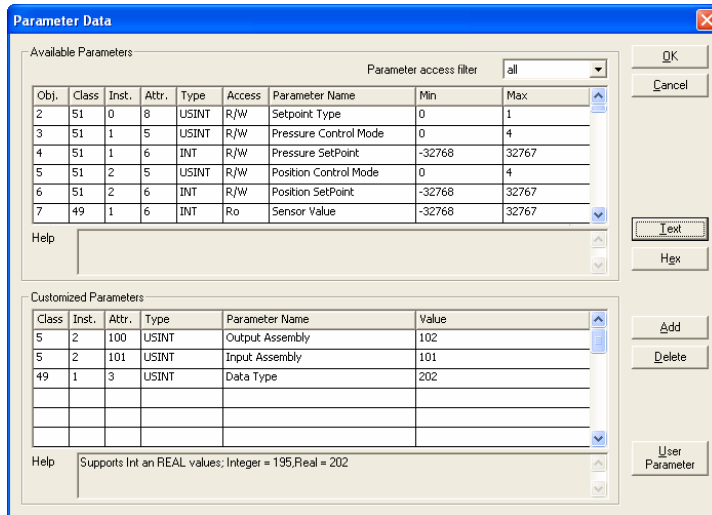
The window «Device Configuration» opens

3. Set  at «UCMM check»
4. Set «Production inhibit time» to 100
5. Choose the assemblies (Input 101 and Output 102) at «Available predefined connection data types»
6. Click the command button [Parameter Data...]



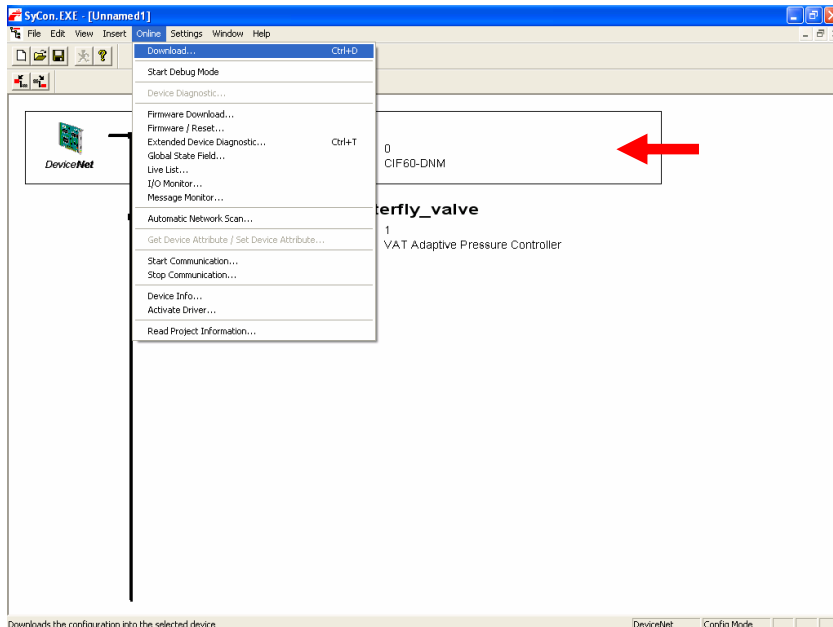
The window «Parameter Data» opens

7. Choose the assemblies «Input 101 and Output 102» at «Available Parameters» by double click
8. Choose the «Data Type 202» at «Available Parameters» by double click
9. Click the command button [OK]



## 2.9 Download the settings

1. Select Master Device
2. Click the pull-down menu «Online» > «Download»



End of «DeviceNet®» setup instruction with Hilscher software.